

# ELEMENTS OF ART POSTERS

## Value

### Value

Value in art pertains to the relative lightness and darkness of colour. Colour has high value when it appears bold and bright. Colour has a low value when it is muted with white. A value scale can be created using any colour, black and white. At one spectrum of the scale white is added to blue to increase in brightness. In the middle of the scale a

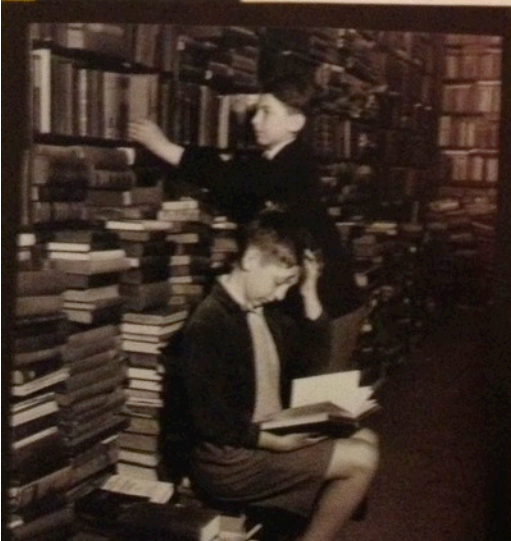


LEFT: In the first stage of the painting, unmodulated colours form.



LEFT: Adding color white also to see the results of the form's tonal value.

BELOW: The effect of a sphere is approximated by circles in increments of increasing value.





# ELEMENTS OF ART POSTERS

## Form

*Form*

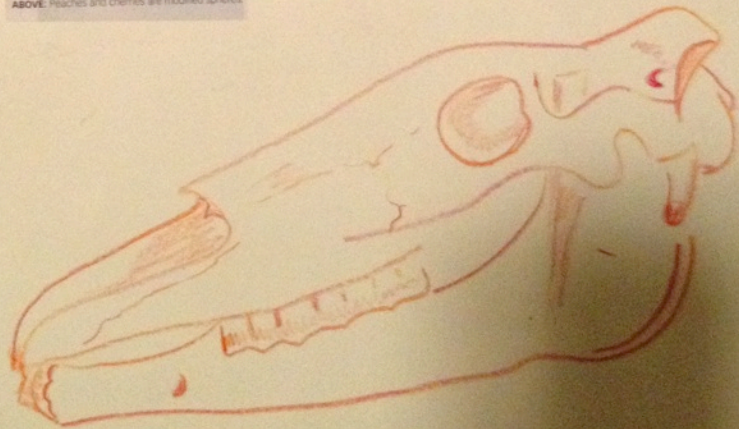
*Form is a three-dimensional irregular or geometric shape. Form is created through sculpture, carvings and other artistic disciplines that use hands-on mediums like glass, natural fibers or textiles.*



ABOVE: Peaches and cherries are modified spheres.



BELOW: Pears are spherical, but the indentation on top of the plum on the right is like an open-topped cylinder.



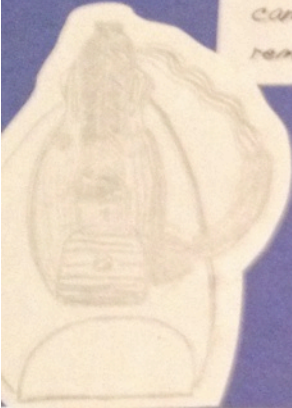
Markus 10/17/2005



# ELEMENTS OF ART POSTERS

## Line

*Line*  
A line is a mark or a stroke. It can be diagonal, vertical or horizontal. It is created with a pen, pencil or any kind of tool. It can be continuous, broken, straight or curved. A line can be thin or thick and is not required to remain consistent.





# ELEMENTS OF ART POSTERS

## Colour

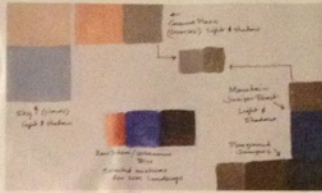
### Colour

Colour is created by rays of light. It is dependent on hue, saturation and brightness of reflected light. Colour can be classified into primary, secondary and tertiary. Primary colours red, yellow and blue can be combined to create any colour. Secondary colours are made by combining two primary colours and include orange, violet and green. Tertiary colours are made by mixing secondary colours. Colour can be broken down into cool and warm colours. Cool colours are blue, green and violet. Warm colours are red, orange and yellow. Mixing different amounts of a particular colour changes the colour hue. Contrast is created by placing two different colours side by side. Complementary colour consist of two colours that are opposite to each other on the colour wheel.



ABOVE: Color palette for New Mexico Cloud

BELOW: Color plan for New Mexico Cloud

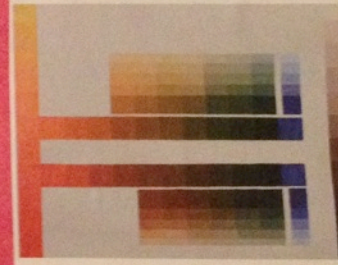


color corner



ABOVE: Complementary chart using raw sienna and ultramarine blue—with white

BELOW: Primaries chart using cadmium red light, cadmium yellow and ultramarine blue—plus white



Painting landscapes with a severely limited palette allows for a surprising selection of harmonious colors.





# ELEMENTS OF ART POSTERS

## Space

*Space*  
Space in an artwork pertains to a real or illusory three-dimensional component that illustrates form and depth. The ways that an artist can develop space include overlapping objects, changing sizes of objects and utilizing perspective.



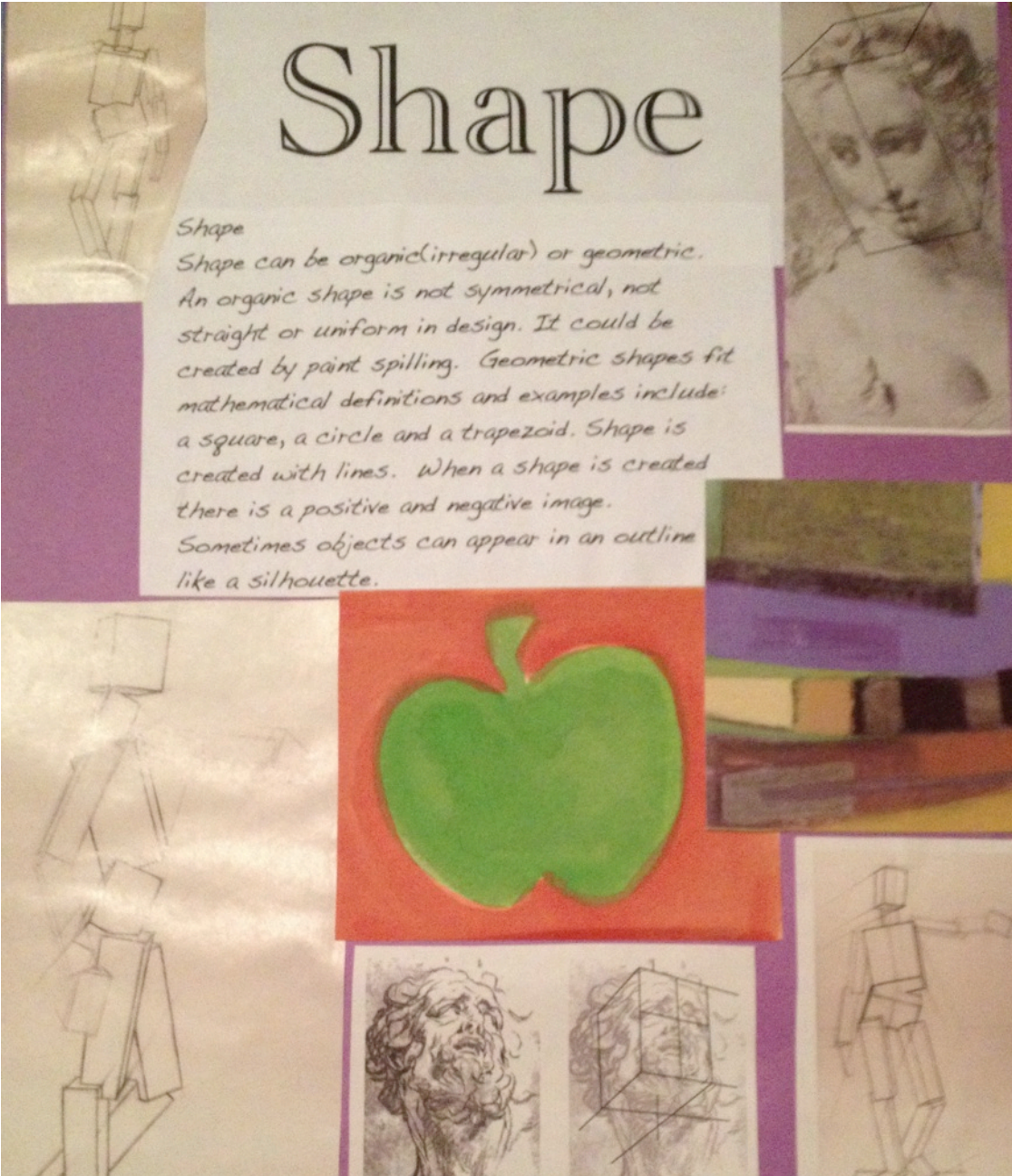


## ELEMENTS OF ART POSTERS

# Shape

### *Shape*

*Shape can be organic (irregular) or geometric. An organic shape is not symmetrical, not straight or uniform in design. It could be created by paint spilling. Geometric shapes fit mathematical definitions and examples include: a square, a circle and a trapezoid. Shape is created with lines. When a shape is created there is a positive and negative image. Sometimes objects can appear in an outline like a silhouette.*



# Texture

### *Texture*

*Texture is the visual and tactile quality of a surface of art. Texture is created by a repetition of lines and shapes or by using a variety of materials.*

